



# BAROSSA REGION INVESTMENT MAP

# WHAT IS CRITICAL FOR THE REGION?

ENTREPRENEURSHIP

START-UPS

INNOVATIONS

TALENTS

TECHNOLOGY

INVESTMENTS



\$\$\$

JOBS

CHANGE OF  
BEHAVIOUR

BE PROACTIVE ATTRACTING DESIRED FUTURE

**INVESTMENT MAP –**

**INVESTMENTS ATTRACTION TOOL???**

**FUTURE ATTRACTION TOOL**

Several thin, white, parallel diagonal lines extending from the bottom right towards the top right of the slide, adding a modern, dynamic feel to the design.

# WHAT IS THE INVESTMENT MAP?

- **SNAPSHOT OF THE REGION**

- **DISPLAYS**



- **REGIONAL FEATURES**

- **INFRASTRUCTURE**

- **KEY INDUSTRIES AND CLUSTERS**

- **INVESTMENT OPPORTUNITIES**

## HOW IT HAPPENS?

- Through WEB based GIS application available to the world
- Information presented in a series of layers(maps) that can be viewed in any browser
- Allows layers to be overlaid to inform investment decisions

# TRIPLE BENEFIT

## ■ FOR THE INVESTORS

- ONE STOP SHOP
- QUICK AND EASY OVERVIEW
- FOCUS ON PRIORITY INDUSTRIES
- UNDERSTANDING INFRASTRUCTURE
- INVESTMENT OPPORTUNITIES IDENTIFIED
- INVESTMENT GUIDE PROVIDED

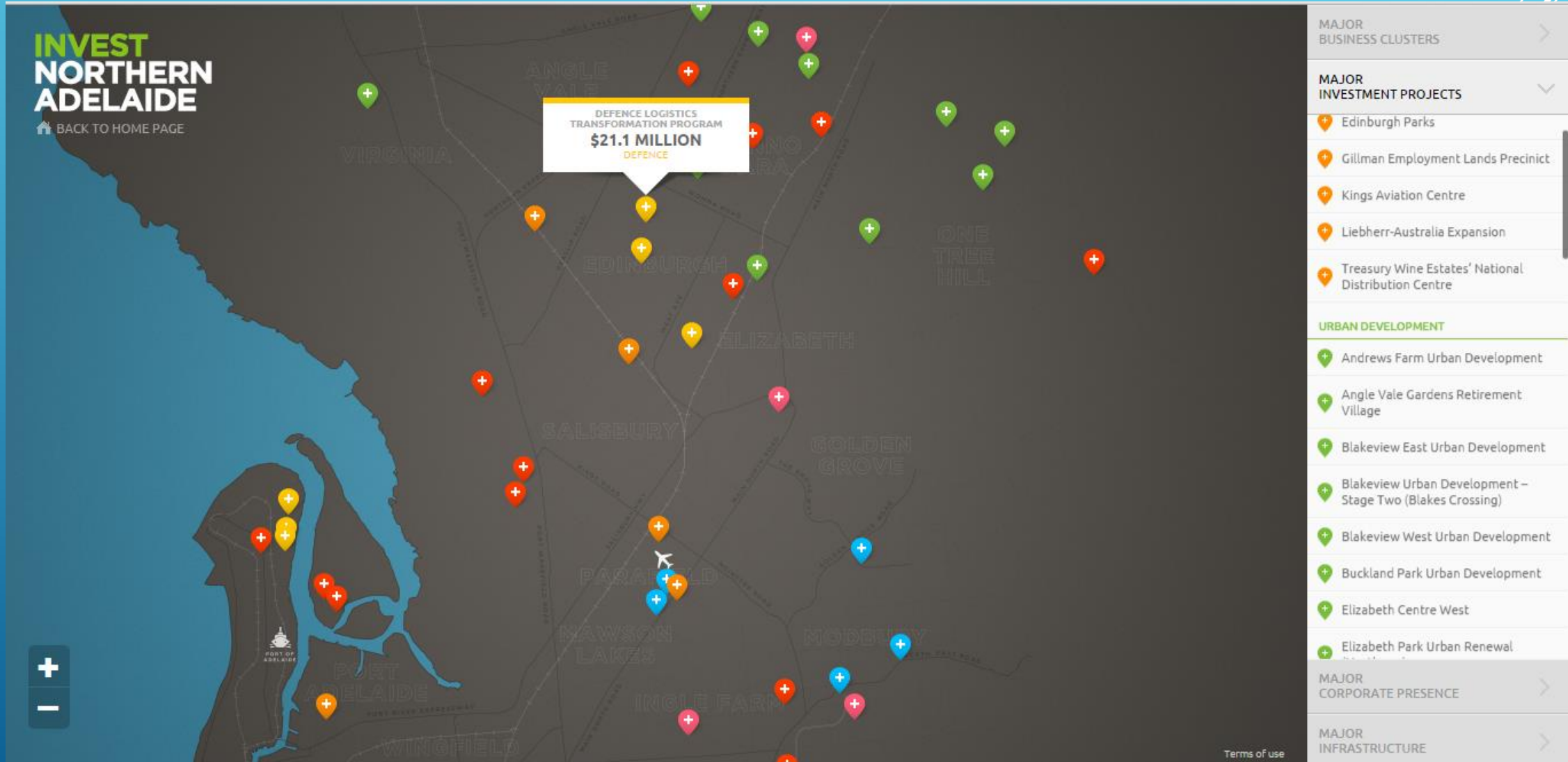
## FOR LOCAL BUSINESS

- DISPLAY AND PROMOTION OF YOUR BUSINESS AND YOUR INVESTMENT OPPORTUNITIES
- BECOME A PART OF BIGGER PICTURE
- UNDERSTAND YOUR MARKET ENVIRONMENT
- OPPORTUNITIES FOR NETWORKING

## FOR ECONOMIC DEVELOPMENT

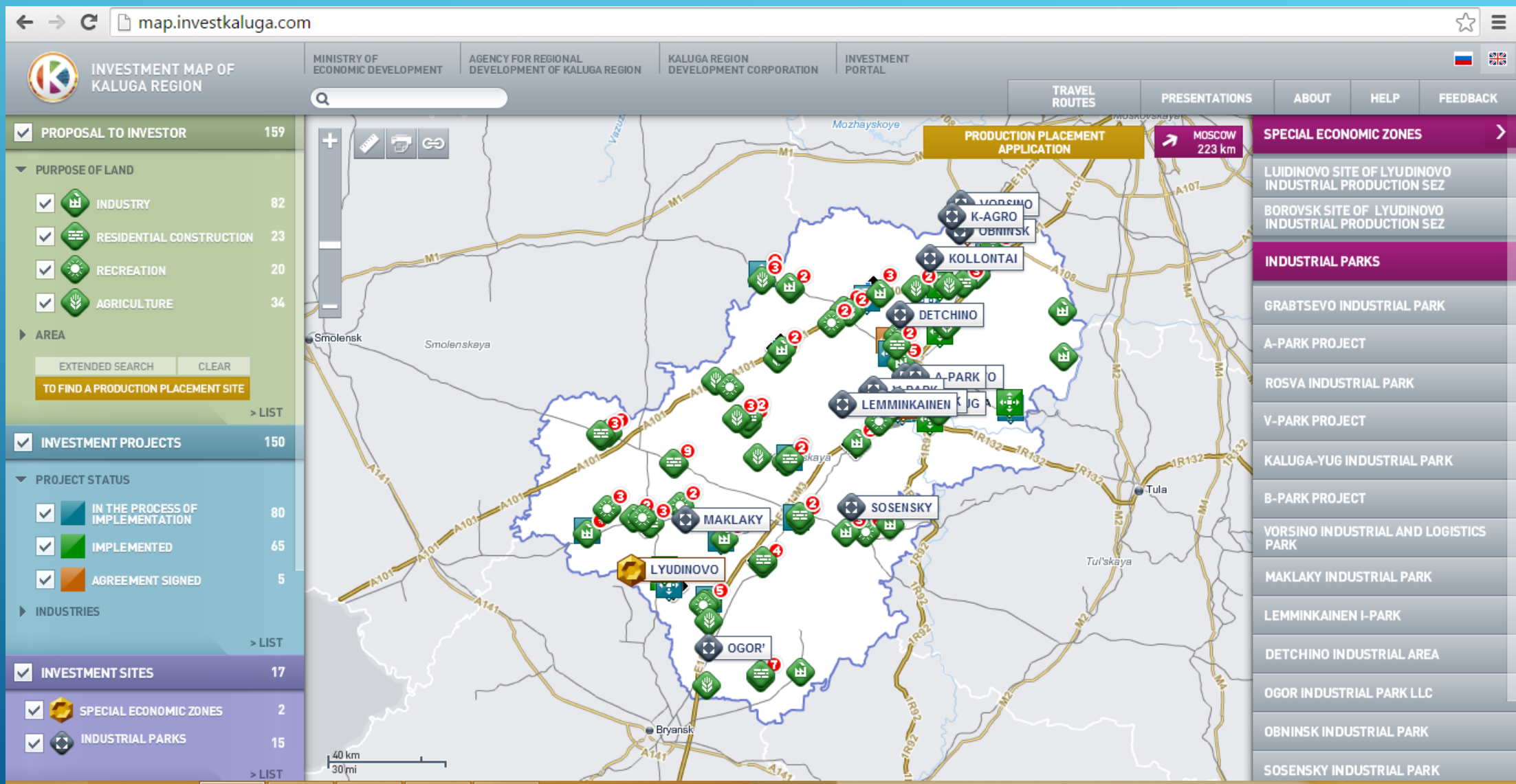
- INVESTMENTS ATTRACTION
- BUSINESS DATA BASE UPDATING ON A REGULAR BASIS

# HOW OTHERS DO IT?





# HOW OTHERS DO IT?



# WHERE WE START

READ TERMS AND CONDITIONS AND TICK THE BOX

The screenshot shows the 'Barossa Region Investment Map' website. The header includes the 'Regional Development Australia Barossa' logo, the title 'Barossa Region Investment Map', the subtitle 'Locating business opportunities', and a navigation menu with links: 'How it Works', 'About the Region', 'Investor Guide', 'Investment Opportunities', 'Industry Information', and 'Contact Us'. A 'Layer List' sidebar on the left contains 'Industry Layers', 'Investment Opportunities', and 'General Layers'. The main map area displays a map of the Barossa region with various locations and infrastructure. A pop-up window is centered on the map, containing the following text:

**Regional Development Australia Barossa**

Barossa Region Investment Map (the Map) is a snapshot of the Barossa Region. The Barossa Region includes four Council areas – Barossa, Light, Gawler and Mallala. The Map highlights the region's economic, community and cultural assets to assist in deciding where investments is most strategic.

Barossa Region Investment Map is produced by Regional Development Australia Barossa (RDAB). RDA Barossa's role is to increase economic diversity, economic growth and jobs. The Map is for potential investors in the region. The first step is to explore the Region with the Map. By accessing the map and associated information, you agree as follows:

- The Map is to be used for information purposes only. The user should conduct their own subsequent investigations or enquiries about the accuracy or completeness of information contained in the map. Users who identify omissions or inaccuracies in the map should provide feedback to RDA Barossa on the contact us page.
- The Map is provided free of charge under certain terms and conditions.
- I have read the [terms and conditions](#) concerning the use of this investment map.
- I accept these terms and conditions.

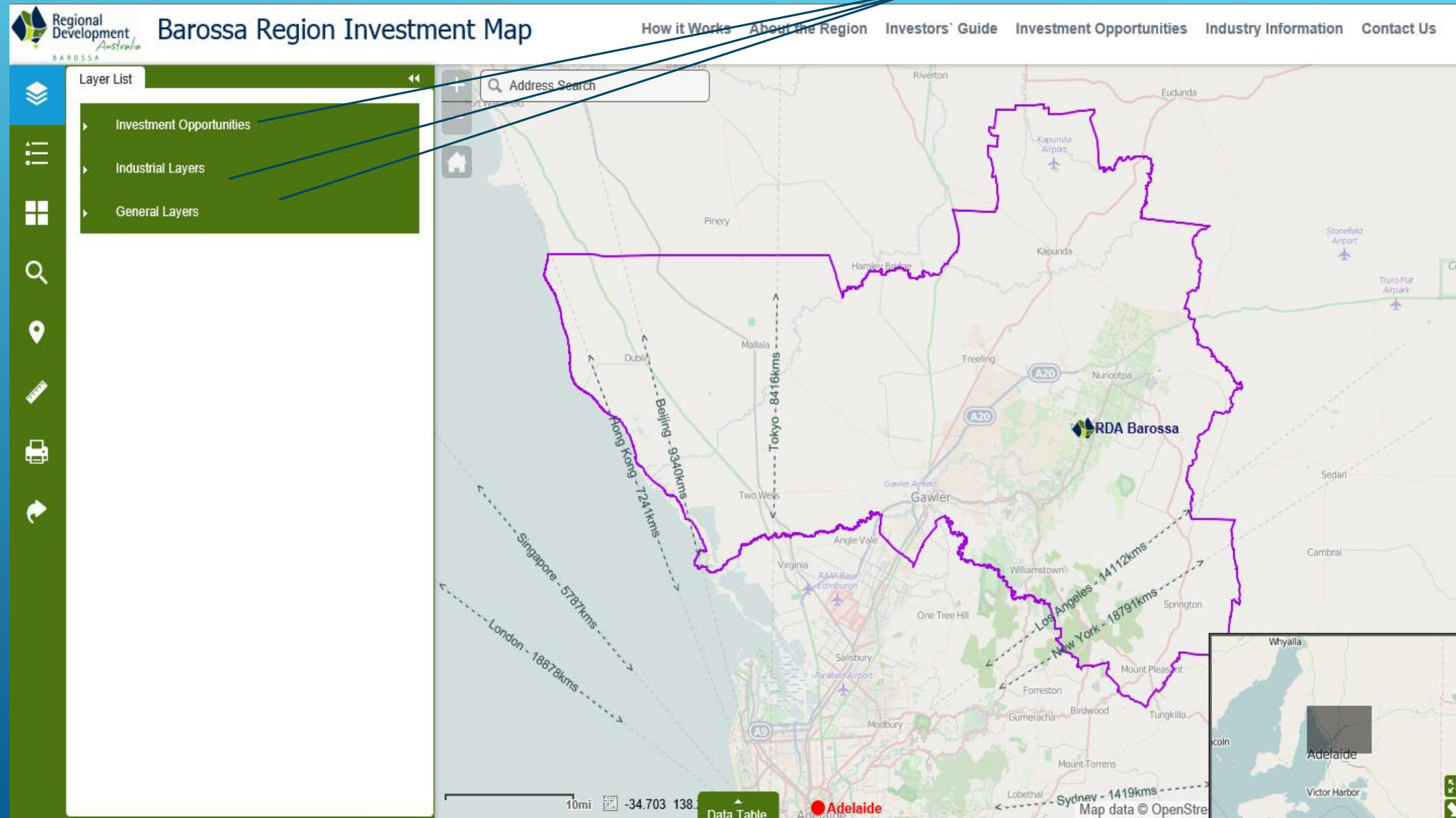
☒ I agree to the above terms and conditions

OK

The pop-up window is overlaid on a map showing the Barossa region, with a blue line indicating the path from the 'WHERE WE START' text to the 'I agree to the above terms and conditions' checkbox. The map also shows a 'Data Table' button at the bottom center and a 'Move mouse to get coordinates' button at the bottom left. An inset map in the bottom right corner shows the location of the Barossa region within South Australia, with Adelaide highlighted.



# SELECT THE CATEGORY



# SELECT LAYERS FROM CATEGORIES

Regional Development Australia  
BAROSSA

## Barossa Region Investment Map

How it Works About the Region Investor Guide Investment Opportunities Industry Information Contact Us

Layer List

- Investment Opportunities
- General Layers
  - Introduction
  - Social Infrastructure
  - Transport
  - Geography
  - Planning
- Industry Layers
  - Wine Industry
  - Food Industry
  - Growers Producers
  - Tourism
  - Equine and Canine
  - Weddings and Events
  - Wedding and Events
  - Manufacturing, Engineering and Construction

Address Search

Map showing the Barossa Region with various towns and distances:

- Balaklava
- Bowman's Bay Intermodal
- 522 m
- 45 m
- Allendale North
- Kapunda
- 547 m
- 110 m
- MALLALA
- Freeling
- Nuriootpa
- Angaston
- Tanunda
- Roseworthy
- Gawler
- Barossa
- 640 m
- 509 m
- 153 m
- Edinburgh North Intermodal (Elizabeth)
- Salisbury
- Port Adelaide
- Los Angeles 14,112 km
- New York 16,791 km
- Berlin 17,763 km
- London 18,678 km
- Singapore 5,781 km
- Tokyo 8,416 km
- Beijing 9,908 km
- A1-Princes Hwy
- A10
- B10
- B31
- B84
- B81
- 10 mi
- 34.159 139.573 De
- Data Table

Inset map showing the location of the Barossa Region relative to Adelaide and the Murray-South National Park.



# TURN ON LAYERS BY CLICKING THE BOX

**Regional Development Australia BAROSSA** Barossa Region Investment Map

How it Works About the Region Investors' Guide Investment Opportunities Industry Information Contact

**Layer List**

- Investment Opportunities
- Industrial Layers
- General Layers
  - Introduction
  - Social Infrastructure
  - Transport
  - Geography
  - Planning
    - ☐ Cadastral
    - ☒ LGAs
    - ☒ Barossa Region
    - ☐ Localities
    - ☐ Residential Code
    - ☐ Development Planning Grids
    - ☐ Land Development Proposals
    - ☐ Land Development Zones

Address Search

Map showing the Barossa Region boundary (red outline) and surrounding areas. Key locations include Adelaide, Gawler, Light, Mallee, and Barossa. Distances to major cities are indicated: London - 18878kms, Singapore - 5787kms, Hong Kong - 7241kms, Beijing - 9340kms, Tokyo - 8416kms, Los Angeles - 14112kms, New York - 18791kms, Sydney - 1419kms. The map also shows the RDA Barossa logo and the Adelaide location.

10mi -34.511 138. Data Table

Map data © OpenStreetMap

# ZOOM IN, CLICK ON THE FEATURE TO BRING TO SHOW THE POP UP BOX

www.barossa.org.au/maps/index.html

Regional Development Australia  
Barossa Region Investment Map

How it Works About the Region Investor Guide Investment Opportunities Industry Information Contact Us

Layer List

- Planning
- Industry Layers
  - Wine Industry
    - ☐ Wineries
    - ☒ Wine Services Suppliers
      - Analytical/Chemical
      - Analytical/Chemical
      - Bottling/Packaging/Labeling
      - Consulting Services
      - Contract Winemaking
      - Engineering/Technology
      - Filtration
      - Nursery
      - Oak products

Address Search

(1 of 2)

WEBSITE [More info](#)

IMAGE [More info](#)

TELEPHONE +61 8 8562 111

PRODUCTS\_SERVICES filtration/engine

CATEGORIES Engineering/Tec

Image 1

**VA**

**FILTRATION**

FINE WINE REFINED

[Zoom to](#)

Vale

Map labels: Nain, Greenock, Daveyston, Sturt Hwy, Greenock Rd, Seppeltsfield, Marananga, Ston Well, Lanunda, Gomersal, Gomersal Rd, Rosedale, Rowland Flat, Krondorf, Lyndoch, Sandy Creek, B2mi, Vale, Mount McKenzie, Keyneton, Flaxman Valley, Esri, HERE, DeLorme, USGS, NG

Data Table



# VIEW AND SEARCH USING THE DATA TABLE

www.barossa.org.au/maps/index.html

Regional Development Australia  
BAROSSA

## Barossa Region Investment Map

How it Works About the Region Investor Guide Investment Opportunities Industry Information Contact Us

Layer List

- Geography
- Planning
- Industry Layers
  - Wine Industry
  - Food Industry
  - Growers Producers
  - Tourism
  - Equine and Canine
    - ☐ Equine Facilities and Clubs
    - ☐ Services and Suppliers
    - ☐ Studs
    - ☐ Trainers
    - ☒ Veterinary
    - ☐ Canine Breeders
  - Weddings and Events
  - Wedding and Events
  - Manufacturing, Engineering and Construction

Address Search

CATEGORY: Equine veterinary

Image 1

Zoom to

Data Table

Options Zoom to Clear Selection Refresh

Distances Logistics Hubs Adelaide LGAs Veterinary

name	address	town	state	postcode	telephone	website	image	product/services	category
Equidae- Horse Dentist	1 Isaac Street	Mt Pleasant	SA	5,235	+61 (0)419035244	<a href="http://www.facebook.com/">http://www.facebook.com/</a>		Equine Clinic/Dental	Equine veterinary
Animalia Vet Clinic	1 Main North Rd	Evanston	SA	5,116	+61 8 8523 1133	<a href="http://www.animaliavetclin">http://www.animaliavetclin</a>		Veterinary Services - all species	All Pets veterinary
Jim Johnson Chiropractor	10 Main North Road	Gawler	SA	5,118	+61 (0)410442090	<a href="http://www.johnsonchiro.c">http://www.johnsonchiro.c</a>		Chiropractor	Equine veterinary
Noahs Crossing Veterinary Clinic	168 Hayman Road	Lewiston	SA	5,501	+61 08 85242260	<a href="http://www.noahscrossing">http://www.noahscrossing</a>	<a href="http://www.localvet">http://www.localvet</a>	Veterinary	Equine veterinary
Greencross Vets	170B Murray St	Gawler	SA	5,118	+61 8 8523 1789	<a href="http://www.greencrossvet">http://www.greencrossvet</a>		Veterinary Services - Small animal	All Pets veterinary
Gawler South Small Animal Hospital	18 Fourth St	Gawler	SA	5,118	+61 8 8522 3500	<a href="http://www.gawlersouthve">http://www.gawlersouthve</a>		Veterinary Services - Small animal	All Pets veterinary

17 features 0 selected



# EXPLORE THE MAIN MENU

How it Works About the Region Investor Guide Investment Opportunities Industry Information Contact Us

## THE BAROSSA REGION WINE INDUSTRY

### QUICK FACTS

The Barossa as a world class region of fine wine endeavour based on a unique story of generations, inheritance and hallowed ground. The Barossa is a home to some of the oldest vineyards in the world.

SA produces more than 75% of Australia's premium wines. The Barossa on average accounts for 27% of the total value of the South Australia grape and wine sector contributing over \$740 million annually.

The Barossa's 13,626 hectares of vineyards produce on average 80,000 tonnes of grapes with an estimated value of more than \$80 million per annum. More than 600,000 tonnes of wine grapes processed annually in the Barossa.

2,700 people employees in the wine and grape sector in the Barossa accounts for 9.32% of national wine sector employees.

Since 2001 投资优质葡萄酒 cases to over 39 million

巴罗萨是澳大利亚著名的葡萄酒产区。

投资机会:

- 能源基建 (太阳能和废料产能)
- 水资源再利用的基建扩展
- 葡萄酒及酒庄, 包括高附加值的葡萄酒旅游
- 新市场的发展

巴罗萨地区发展理事会组成



澳大利亚巴罗萨地区发展理事会是一个以澳大利亚政府、南澳州政府和地方政府共同合作的一个政府机构, 旨在发展和扩大地方经济并吸引更多投资。

**巴罗萨地方委员会**  
www.barossa.sa.gov.au  
马丁·麦克卡锡, 首席执行官  
P. 08 8569 8444  
E. mmcCarthy@barossa.sa.gov.au

**高勒镇地方委员会**  
www.gawler.sa.gov.au  
亨利·纳特, 首席执行官  
P. 08 8522 9241  
E. henry.nat@gawler.sa.gov.au



**莱特地区地方委员会**  
www.light.sa.gov.au  
布莱恩·赖特, 首席执行官  
P. 08 8525 3200  
E. light@light.sa.gov.au



**马拉拉区政务委员会**  
www.mallee.sa.gov.au  
卡特丽娜·马林, 首席执行官  
P. 08 8527 0200  
E. info@mallee.sa.gov.au

### BGWA

Barossa Grape and Wine Association (BGWA)  
www.barossa.com

BGWA is responsible for promoting the Barossa Brand and represents approximately 550 grape growers and 170 winery members in the Barossa.

### INDUSTRY BODIES

- Wine Australia Corporation  
www.wineaustralia.com
- Winemakers' Federation of Australia  
www.wfa.org.au
- Wine Grape Growers' Australia  
wgga.com.au
- Grape Wine Research and Development  
www.research.wineaustralia.com
- Australian Wine Research Institute  
www.awri.com.au
- South Australian Wine Industry Association  
www.winesa.asn.au
- Wine Grape Council of South Australia

## ABOUT THE REGION

### BAROSSA REGION

The Barossa Region stretches from the shores of Gulf St Vincent 80 km east to include the watershed of the Mount Lofty Ranges. From south to north, the Barossa region extends from the

### ECONOMICS

ECONOMIC DIVERSITY  
DESIGN THINKING  
CLUSTER DEVELOPMENT  
CREATIVE INDUSTRIES

### Number of businesses by industry

Other services (no.)	141	254
Health care and social assistance (no.)	72	180
Public administration and safety (no.)	35	180
Professional scientific and technical (no.)	12	124
Financial and insurance services (no.)	12	354
Transport, postal and warehousing (no.)	12	278

### ENTREPRENEURSHIP INNOVATION DIGITAL START UPS



### Investor Guide

#### BAROSSA REGION INVESTMENT MAP

Take a journey around the Region using a GIS Map.

Barossa Region Investment Map is a snapshot of the Region highlighting strategic investment opportunities.

### RDA BAROSSA SERVICES FOR INVESTORS

Explore RDA Barossa services for Investors, contact RDA Barossa Economic information/research required.

Download RDA Barossa services for Investors

### INVESTMENT PROJECT SUMMARY

Submit Investment Project Summary to help us identify your needs and preferences, locations, etc. Download the form here.

### LOCAL COUNCIL

RDA Barossa can direct investors to the relevant Council to see Planning Specialist.

Lodging a development Application with the Barossa Council

Lodging a Development Application with the Light Regional Council

### EQUINE HUB

(An Equine Hub in the Barossa region)

#### PROJECT IDEA

This Project creates the new equine facility: international standard Eventing. The new facility will bring new demand which will in turn lead to increased tourism. The value of the Australian equestrian market is \$ 6.3 billion and the Region is conservatively estimated at \$37.7 million annually\*\*.

The monetization value is \$60 million if the project captures even 10% of the market.

#### PROBLEM SOLVED

The lack of international standard facilities prevents SA competing in its high profile associated with Three Day Event.

#### PROJECT DESCRIPTION

This Project creates the infrastructure required for an international standard facility.

The Project proposes tourist facility as a part of the complex. Possible locations:

1. Roseworthy. A
2. Mount Pleasant
3. Gawler Race
4. Adjacent location

#### BUDGET

17-18m\*

#### Contact Us

To contact Investment Map Support Team - map@barossa.org.au submit a New Business

Option 1. To update the information about your Business or

Name of the company

Latitude (optional)

Longitude (optional)

Street

Option 2. To submit

If your Investment

go to Option 1.

If you have a Business

location has not been identified

Which is required

Investor

Partner

Buyer

Possible Location

Box map and the Pop-up box will appear which provides important information.



Using the Data Table



# AND MAYBE YOU ARE A DOG BREEDER?

www.barossa.org.au/maps/index.html

Regional Development Australia  
Barossa Region Investment Map Locating business opportunities

How it Works About the Region Investor Guide Investment Opportunities Industry Information Contact Us

Layer List

- Investment Opportunities
- General Layers
  - Introduction
  - Social Infrastructure
  - Transport
  - Geography
  - Planning
- Industry Layers
  - Wine Industry
  - Food Industry
  - Growers Producers
  - Tourism
  - Equine and Canine
    - ☐ Equine Facilities and Clubs
    - ☐ Services and Suppliers
    - ☐ Studs
    - ☐ Trainers
    - ☐ Veterinary
    - ☒ Canine Breeders
    - Weddings and Events
    - Wedding and Events
    - Manufacturing, Engineering and Construction

Address Search

(3 of 33)

TELEPHONE +61 8 885243661  
EMAIL rogers@twpo.com.au  
ADDRESS  
WEBSITE  
IMAGE  
BREED Rottweiler  
CATEGORY Rottweiler

Image 1

Zoom to

Options Zoom to Clear Selection Refresh

Distances Logistics Hubs Adelaide LGAs Canine Breeders

name	address	town	state	postcode	telephone	email address	website	image	breed	category
NOTHSTAFF		Dublin	SA	5,501	+61 (0) 412495808	lmhaj1011@bigpond.com		http://cdn-0.justdogbreeds.com/image/bull-terrier.jpg	Staffordshire Bull Terrier	Staffordshire Bull Terrier
WHIRLAWAY		Dublin	SA	5,501	+61 (0) 416173180	lmhaj1011@bigpond.com		http://cdn-3.justdogbreeds.com/image/whippet.jpg	Whippet	Whippet
RUNAMUK		Evanston	SA	5,116	+61 8 85231752	runamuk_astinsa@hotmail.		http://cdn-6.justdogbreeds.com/image/american-staffordshire-terrier.jpg	American Staffordshire Terrier	American Staffordshire Terrier
HILBREN		Evanston Gardens	SA	5,116	+61 8 85235199	lesaints@bigpond.com		http://cdn-6.justdogbreeds.com/image/border-terrier.jpg	Border Terrier	Border Terrier
SAMSHOR		Freeling	SA	5,372	+61 8 85252111			http://cdn-3.justdogbreeds.com/image/whippet.jpg	Whippet	Whippet
STABLEMATE		GAWLER	SA	5,118	+61 8 85225315	nkhan@adam.com.au	http://www.schwartzhundro	http://cdn-5.justdogbreeds.com/image/dalmatin.jpg	Dalmatin	Dalmatin
BARADAV		GAWLER	SA	5,118	+61 (0) 419034515	baradav@adam.com	http://www.baradavgoldens	http://cdn-0.justdogbreeds.com/image/golden-retriever.jpg	Golden Retriever	Golden Retriever

101 features 0 selected

# OR WANT TO INVEST IN AGRICULTURAL LAND?

← → ↻ www.barossa.org.au/maps/index.html

Regional Development Australia BAROSSA

## Barossa Region Investment Map

How it Works About the Region Investor Guide Investment Opportunities Industry Information Contact Us

Layer List

- Investment Opportunities
  - ✓ Tourism
  - ✓ Wine Industry
  - ✓ Other
- General Layers
  - Introduction
  - Social Infrastructure
  - Transport
  - Geography
  - Planning
- Industry Layers
  - Wine Industry
  - Food Industry
  - Growers Producers
  - Tourism
  - Equine and Canine


Address Search

(1 of 2)

- plantable STCC • 8
- acres remnant scrub •
- Red loamy over clay •
- Mains water connected •
- Power available •
- Three stock dams •
- 500mm rainfall area •

CATEGORY Land

Image 1



Zoom to

Map showing the Barossa Region with various towns and roads. A red outline highlights a specific area of interest. The map includes a scale bar and coordinates: -34.486° 139.018 Degrees.

Esri, HERE, DeLorme, USGS, NGA



# OR YOU ARE INTERESTED IN MANUFACTURING?

www.barossa.org.au/maps/index.html

Regional Development Australia Barossa Region Investment Map Locating business opportunities

How it Works About the Region Investor Guide Investment Opportunities Industry Information Contact Us

Layer List

- Industry Layers
  - Wine Industry
  - Food Industry
  - Growers Producers
  - Tourism
  - Equine and Canine
    - ☐ Equine Facilities and Clubs
    - ☐ Services and Suppliers
    - ☐ Studs
    - ☐ Trainers
    - ☐ Veterinary
    - ☐ Canine Breeders
  - Weddings and Events
    - Wedding and Events
  - Manufacturing, Engineering and Construction
    - ☒ Engineering Services Consulting
    - ☐ Industrial Precincts
    - ☐ Manufacturing (NonWine)
    - ☐ Suppliers Services
    - ☒ Industrial Precincts (Areas)

Address Search

(1 of 2)

**Manufacturing, Engineering and Construction - Industrial Precincts (Areas):**

Name

ADDRESS Sturt Hwy

TOWN Gawler

POSTCODE 5,118

STATE SA

Description Kingsford Regional Industrial Estate is a 170 ha estate bounded by the Sturt Highway, the Gawler -Freeling Road, Argent Road to the north and existing industrial land to the south. Kingsford Industrial Estate was

Zoom to

0.2ml -34.554 138.760 Degrees

Options Zoom to Clear Selection Refresh

Distances Logistics Hubs Adelaide LGAs Engineering Services Consulting Industrial Precincts (Areas)

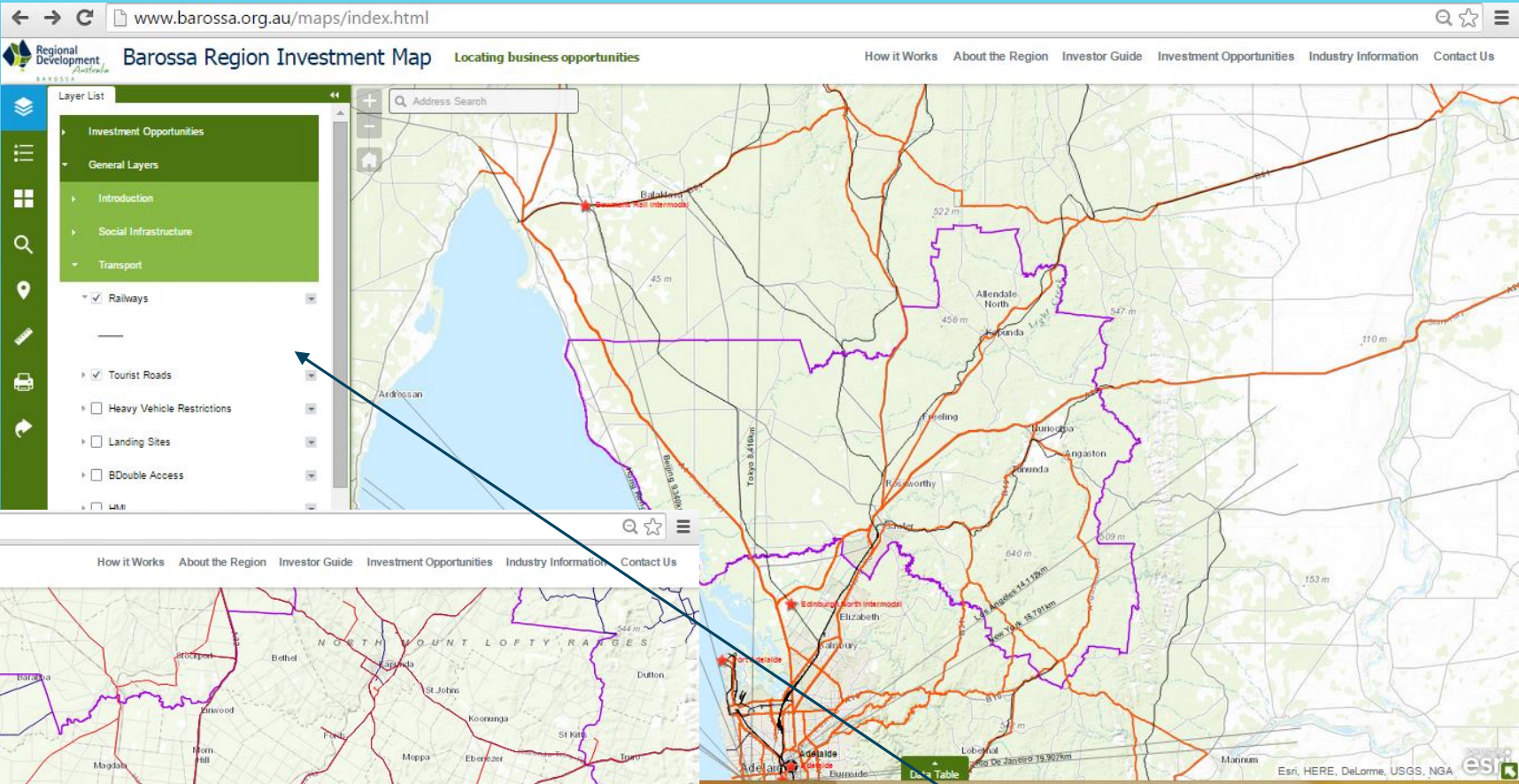
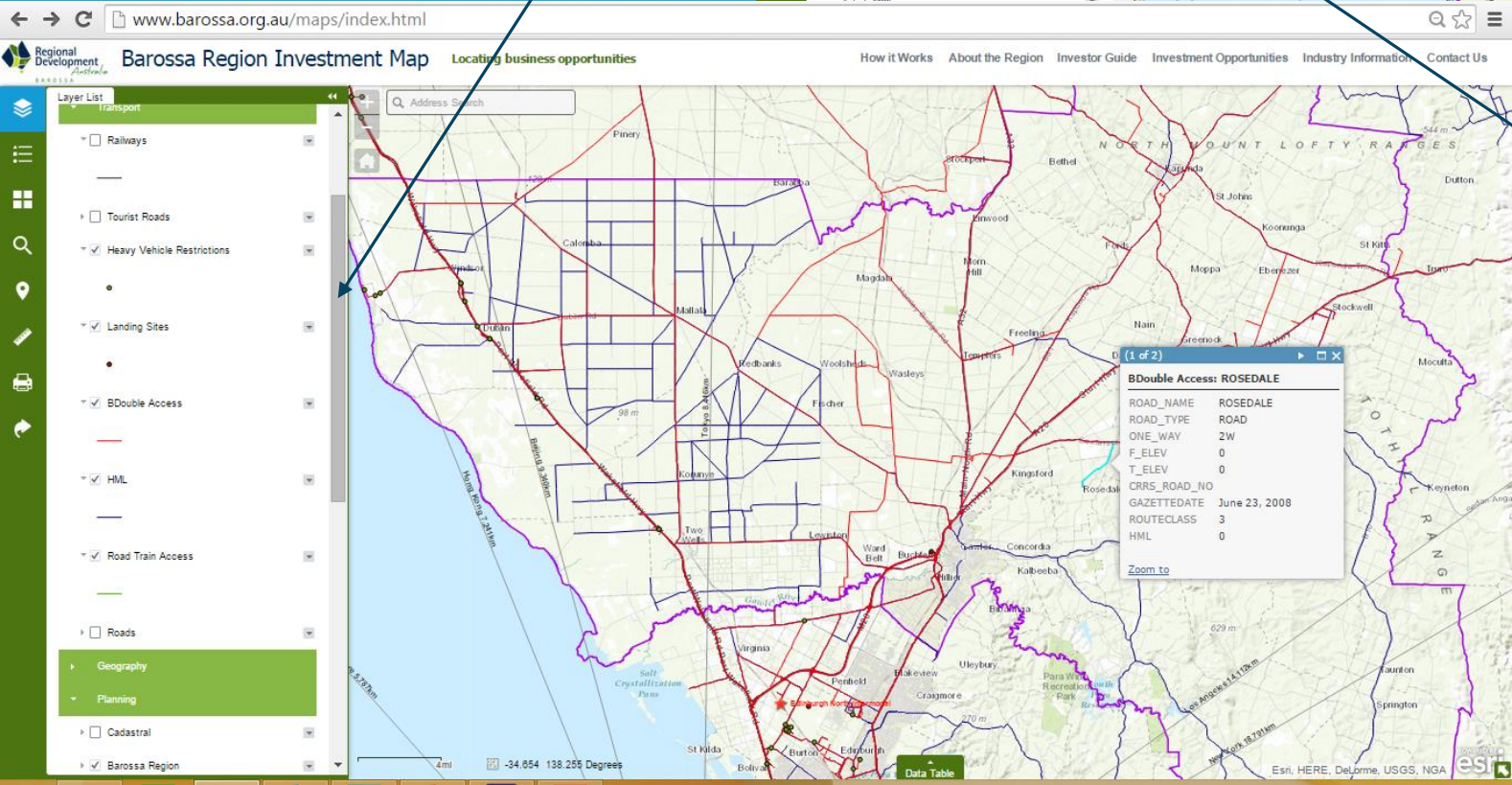
name	address	town	postcode	state	description
	Middle Beach Rd	Two Wells	5,501	SA	Middle beach Rd and Port Wakefield Roads Two Wells
	Sturt Hwy	Gawler	5,118	SA	Kingsford Regional Industrial Estate is a 170 ha estate bounded by the Sturt Highway, the Gawler -Freeling Road, Argent Road to the north and existing industrial land to the south. Kingsford Industrial Estate was identified as a key area for future major industrial development, and is currently the site for the AMCOR glass bottle manufacturing facility. SA Premium

9 features 1 selected



OVERLAY THE MAPS  
TO SEE THE BIGGER  
PICTURE

HEAVY VEHICLES ACCESS

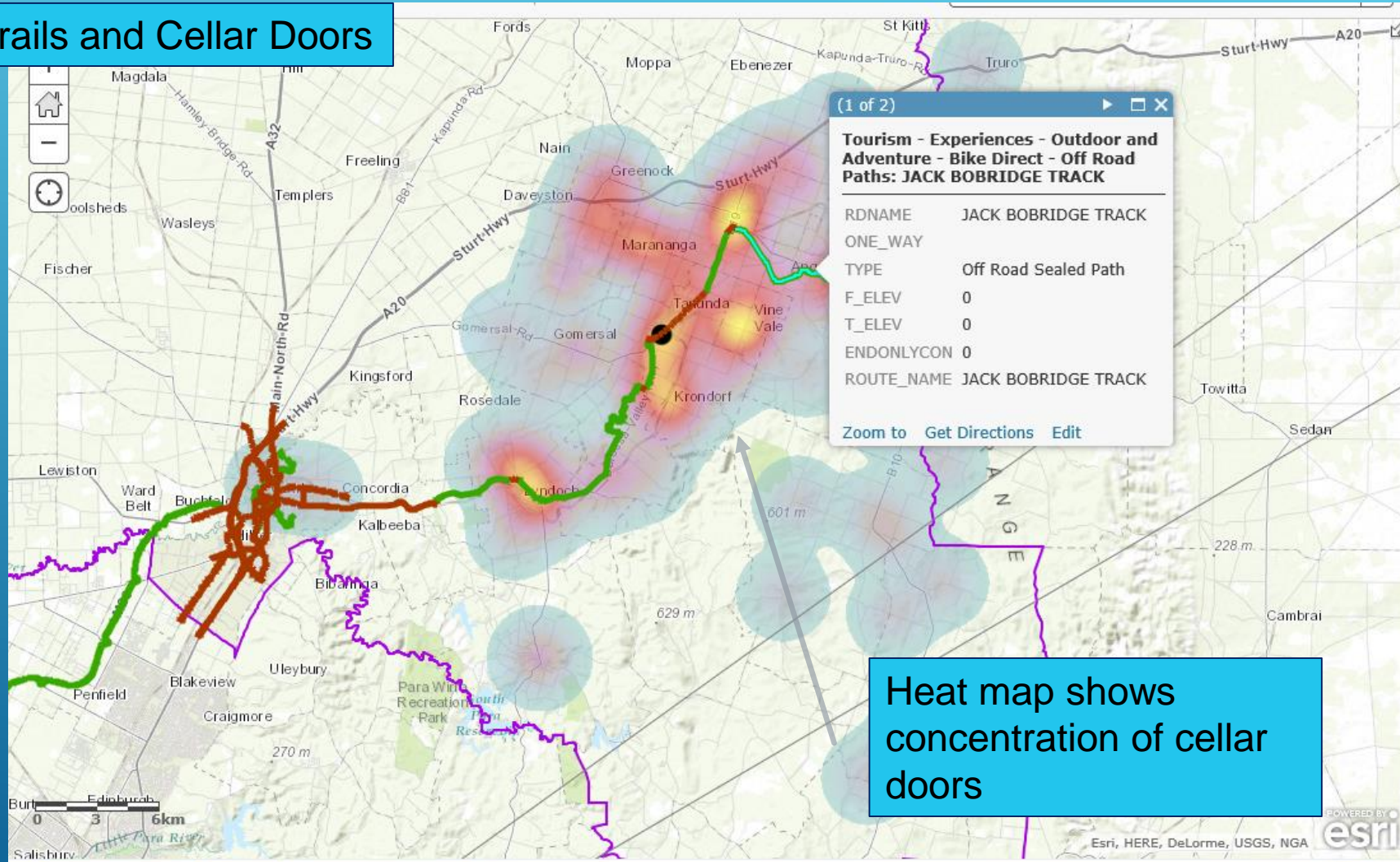


RAILWAY AND MAIN ROADS



# OVERLAY MULTIPLE LAYERS TO PRODUCE A SPECIAL MAP

## Bike Trails and Cellar Doors



# WORK WITH THE SIDE BAR

LAYERS

LEGEND

CHOOSE A  
BASE MAP


SEARCH

BOOKMARKS

MEASURE DISTANCES  
AND AREAS


PRINT

USE LINKS





## Barossa Region Investment Map

[How it Works](#)[About the Region](#)





Basemap Gallery




















Dark Gray Canvas




Imagery



Imagery with Labels



Light Gray Canvas




National Geographic




Oceans




OpenStreetMap




Streets

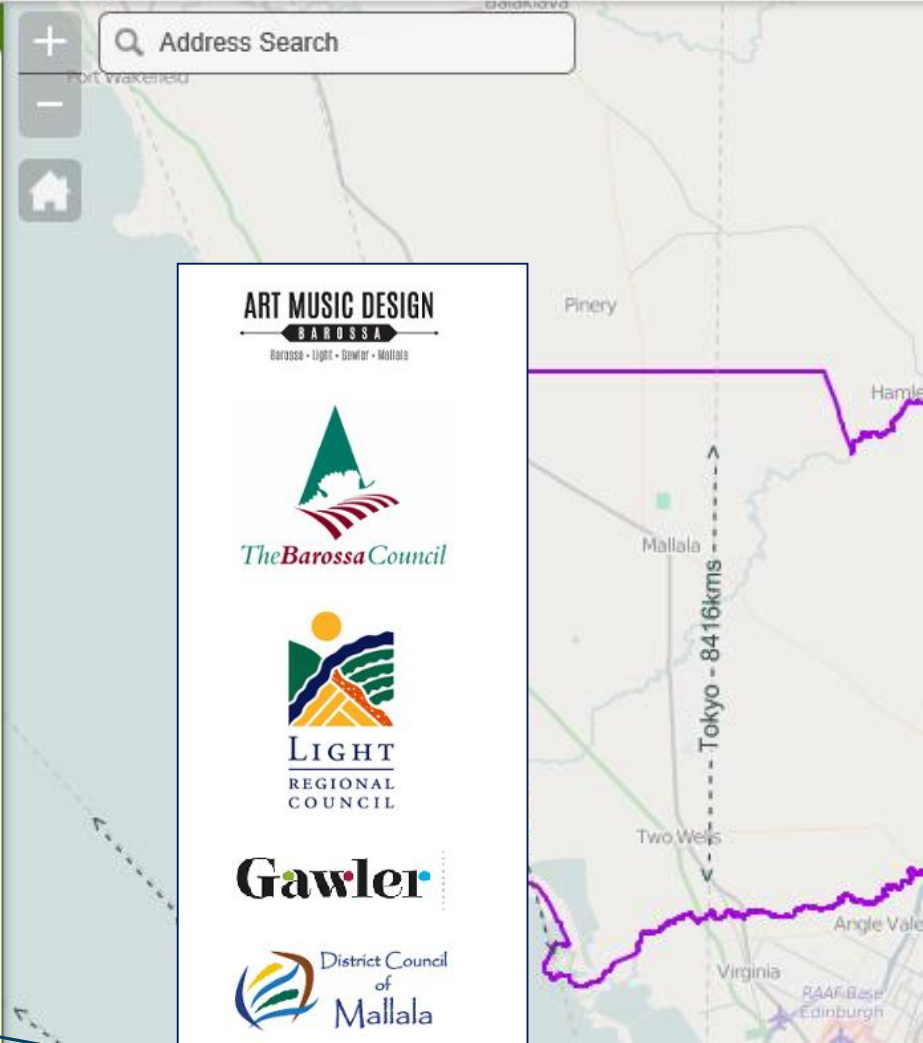


Terrain with Labels



Topographic





Pinery

Mallala


Two Wells

Angle Vale

Virginia

RAAF Base Edinburgh


Tokyo - 8416kms




Barossa • Light • Gawler • Mallala




The Barossa Council



LIGHT REGIONAL COUNCIL



Gawler



District Council of Mallala

## ***Creating this Map we take the risks:***

- *That you will not like it*
- *That you will complain about different mistakes*
- *That some changes will happen quicker than we update the Map*

***But this is the Challenge and we are ready to work with it***

***The Main Thing – for the desired future we should work all together***