



Regional  
Development  
*Australia*

B A R O S S A

*"Barossa, Light, Gawler, Mallala – Working Together"*

# RDA Barossa AGM 2015

*Ivan Venning  
Chair*



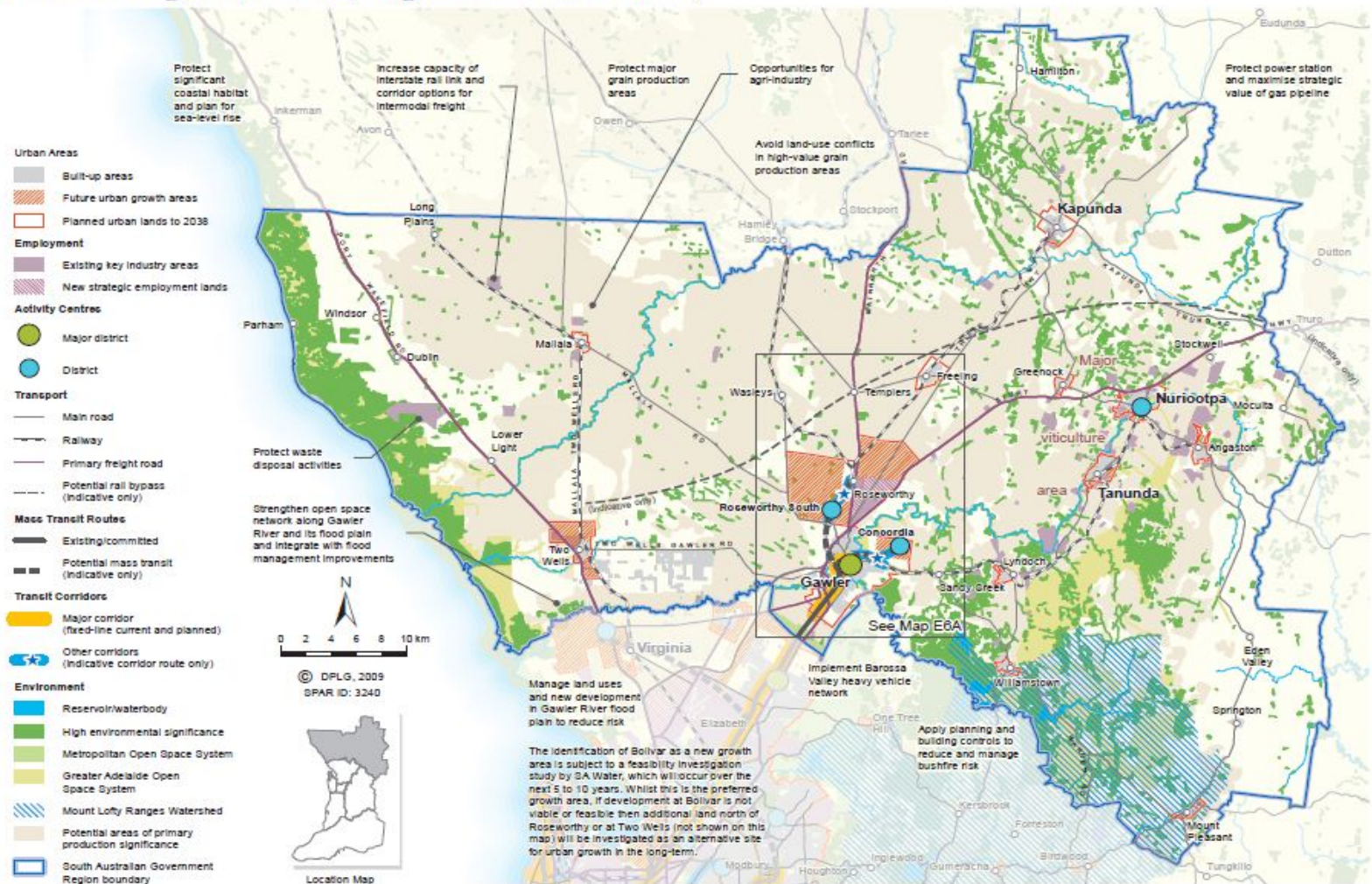
An Australian Government Initiative



An Initiative of  
Government  
of South Australia

# The Region

## RDA Barossa Region (Barossa, Light and Lower North)



# RDA Barossa Shopfronts



Tanunda



Gawler



Kapunda



Two Wells



# Priorities and Game changers

*Vision: Economic Growth in a shared value model with a thriving agricultural sector underpinned by collaboration and boosted by investment, knowledge, services, processes, downstream processing and tourism.*

## **1. Infrastructure Gaps**

- i. Water (policy and integrated re-use schemes)
- ii. Telecommunications and Digital Connectivity
- iii. Energy (distribution and alternatives (renewables))
- iv. Transport – Freight Corridors, Northern Connector, Electrification of rail to Gawler; last mile solutions
- v. Innovation and Entrepreneurship facilities and support services

## **2. Industry Development in targeted growth sectors (opportunities/barriers)**

- i Wine and Food production
  - Grapes & Wine
  - Horticulture – nuts, light veg, high tech
  - Grains including value adding
  - Poultry and Livestock (esp. pork & lamb)
- ii Tourism (International/Domestic)
  - Culinary
  - Cycle
  - Health & Wellbeing; Ecotourism
  - Events: Business, Weddings, Cultural, Cycle

- lii Equine Industries
- liv Education, Knowledge Services,
- v Arts and the Creative Industries
- vi Engineering Services including wine, mining and defence.

## **3. Facilitative Regulatory Framework**

### **4. Partnerships to implement Gamechanger Projects:**

- A Culinary Institute
- Upscale Tourism Accommodation
- Natural gas and W2E for Industry
- Northern Connector with linkages
- Roseworthy Economic Precincts
- A Regional Hospital for the Barossa
- High Speed Broadband everywhere
- Recycled water infrastructure for horticulture
- World heritage Inscription for working farming landscapes
- “Gawler Connect and Main Street Precinct renewal

### **5. Economic Opportunities associated with increased population growth in Gawler, Light and Mallala**

### **6. Research for next Wave of opportunity**

# Board Members



Ivan Venning – Chair



Alex Zimmermann



Victoria McClurg



Katrina Márton



Lynette Seccafien



Brian Carr



Henry Inat



Martin McCarthy



Annabel Mugford



Tony Clark



Rolf Binder



Andrew Morphet



Sarah Henderson

# RDA Barossa Staff



Anne Moroney



Elena Schepina



Charlotte Williams



Craig Grocke



Danny Simpson



Steven Thomas



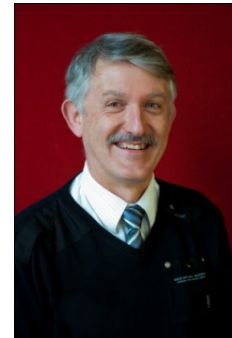
Sue Merry



Meagan Stapleton



Felicity Trinne



Stephen Birch



Caroline McInnes

# Funding Partners



*"Barossa, Light, Gawler, Mallala – Working Together"*



**Government of South Australia**  
Department of State Development



Supported by  
**Government of South Australia**

Primary Industries  
and Regions SA

# Retiring Board Members



Jo Thomas



Wayne Perry



Charles Mansueto  
(Peter Sellar as interim appointment)



# Ian O'Loan



# Annual Report

